



# 2023-2024 PROSPECTUS

Organizational Membership  
Supporter Opportunities  
Exhibit Booths  
Advertising



# ABOUT ISSTD

The International Society for the Study of Trauma and Dissociation was formed in the early 1980's and is the oldest international society to represent the interest of clinicians and researchers working with complex trauma and dissociative disorders. It is a non-profit, professional association, organized to develop and promote comprehensive, clinically effective and empirically based resources and responses to trauma and dissociation.

## Why support or exhibit with ISSTD?

Our members and conference attendees represent the leading professionals in the world of complex trauma and dissociation. Our conferences allow for organizations to network with and promote your organization to attendees who have traveled from around the globe to be present.

As a supporter or exhibitor, you will have the unique opportunity to tap into this esteemed network of professionals. Don't miss out on this limited opportunity to connect one on one with psychologists, social workers, counselors and other mental health professionals who use and promote the products and services you have to offer!





# ISSTD BY THE NUMBERS

## Membership

**1750**

Total Members

**300**

Student & Emerging  
Professional Members

**48**

Countries  
Represented

## Conference Attendees

**330**

2023 Attendees

**80**

Student & Emerging  
Professionals

**12**

Countries  
Represented

## Marketing and Social Media Presence



21,700  
Followers



6,700  
Followers



2,400 Group  
Members



1,600  
Followers



## FUTURE ANNUAL CONFERENCE DATES



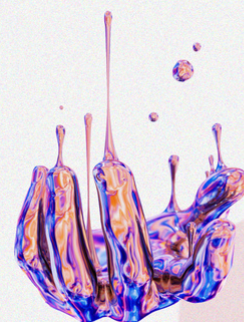
**Boston, Massachusetts**

March 13-17, 2025

# ANNUAL CONFERENCE EXHIBITS

## THE HEALING POWER OF DIGNITY

in the Treatment and Research of Complex Trauma & Dissociation



**Pre-Conference: March 21-22, 2024 | Conference: March 23-25, 2024**  
**Omni Frisco Hotel at The Star**

Our conference attendees represent the leading professionals in the world of trauma and dissociation. Exhibitors have the unique opportunity to tap into this esteemed network of professionals and connect one on one with psychologists, social workers, counselors and other mental health professionals who use and promote the products and services you have to offer!

### STANDARD EXHIBIT BOOTH INCLUDES

- One six foot draped table, two chairs, and exhibitor tent card
- Listing on Conference Website and in Conference app
- Copy of Attendee Registration list with contact information
- ONE complimentary registration to the conference(s)
- Acknowledgement in email sent to database of 10,000 individuals

### EXHIBIT HALL SCHEDULE (SUBJECT TO CHANGE)

#### EXHIBITOR MOVE IN

March 22, 2024 - Afternoon (Exact Time TBD)

#### SHOW HOURS

Friday, March 22, 2024 5:00 PM - 7:00 PM

Saturday, March 23, 2024 10:30 AM - 7:00 PM

Sunday, March 24, 2024 7:30 AM - 3:30 PM

Monday, March 25, 2024 7:30 AM - 1:30 PM

#### EXHIBITOR TEAR DOWN

Monday, March 25, 2024 1:30 PM - 3:00 PM



# ANNUAL CONFERENCE SUPPORTERS

## OPENING RECEPTION OR ANNUAL AWARDS RECEPTION (2 AVAILABLE)

The Annual Awards Reception provides attendees the chance to celebrate the accomplishments of their peers and their contributions to the field.

### PACKAGE INCLUDES

- Recognition at event, during onsite announcements and on conference website
- Prime seating at awards dinner for up to four individuals
- Two to three minute speaking opportunity at opening of awards dinner

## WELLNESS & SELF-CARE CORNER (3 AVAILABLE)

With so much incredible content, it's important for our attendees to have a space to reflect and recenter themselves between sessions. The Wellness & Self-Care Corner provides structured and unstructured opportunities to recharge and process conference content.

### PACKAGE INCLUDES

- Signage in Wellness and Self-Care Corner during event
- Opportunity to create content for a session during a break

## STUDENT & EMERGING PROFESSIONAL EVENT (2 AVAILABLE)

Students and Emerging Professionals (those in the first three years post-licensure) represent 20% of conference attendees. This annual event is an opportunity for those new to the field to meet other students and emerging professionals as well as network with seasoned professionals.

### PACKAGE INCLUDES

- Recognition at event, during onsite announcements and on conference website
- Opportunity for one individual to participate as an industry expert

## MORNING MINDFUL MOVEMENT (2 AVAILABLE)

Help us kick off each day of the main conference with early morning sessions, such as yoga and meditation, to help our attendees recharge.

### PACKAGE INCLUDES

- Recognition at event, in email blasts, and on conference website
- Opportunity to introduce session leader post-session speaking opportunity

**Not seeing an option that fits your needs or want to advertise at multiple conferences?** ISSTD staff is happy to assist you with combining several options above to create a custom package or create one-of-a-kind opportunities that fit the goals of your organization.



# REGIONAL CONFERENCE OPTIONS

## TORONTO REGIONAL CONFERENCE

September 21 - 22, 2023 | Central YMCA

### BOOTH INCLUDES

- One six foot draped table, two chairs, and exhibitor tent card
- Listing on Conference Website and acknowledgement in conference emails
- ONE complimentary registration
- Additional supporter opportunities available upon request



## VIRTUAL ADVERTISING

ISSTDWorld is our online member community platform which includes discussion boards and a resource library for members, access to member-only benefits, an expanded Find-a-Therapist database and list of upcoming events.

Our Conference App is a great way to get your company or organization front and center with conference attendees. Our conference app is home to our online schedule, speaker and presentation information, certificate program, and much more!

## ANNUAL CONFERENCE APP ADVERTISEMENTS

### Home Screen Tile



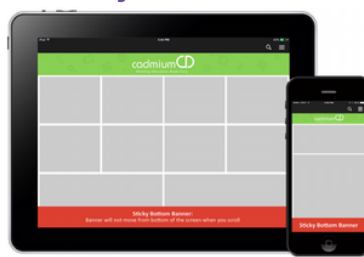
1/3 width: 400 x 800

### Home Page Banner



Full width: 2000 x 400

### Sticky Banner



Full width: 2000 x 175

### Splash Page



Tablet: 2048 x 1536

## ISSTDWORLD ADVERTISEMENTS

### Banner Advertisement

Placement Options:

Homepage or Selected Community Page

Location: Top of Page

Dimensions: 962 x 250 px



Access the ISSTD Online  
Learning Library

### Button Advertisement



The Center for  
Advanced Studies  
in Trauma & Dissociation

Full Year Webinar Pass  
Available Now!



Register today and  
pay one low price for  
access to all 2019  
live and recorded  
webinars!

Placement Options:

Homepage or Selected  
Community Page

Location:

Right Side of Page

Dimensions: 300 x 250 px



# YEAR ROUND OPPORTUNITIES

## WEBINAR SUPPORTER

The ISSTD Center for Advanced Studies in Trauma and Dissociation webinars present timely, trauma-informed content and learning opportunities for members, as well as the broader mental health community. ISSTD webinars are presented live six to ten times annually and are recorded for purchase for those unable to attend the live version.

### PACKAGE INCLUDES

- Recognition on the webinar page of the ISSTD Website
- Recognition in webinar email marketing
- Recognition during the webinar presentation
- Two complimentary registrations for company representatives/participants of company's choice
- Acknowledgement at Annual Conference
- Free Totebag Insert at Annual Conference

## EMAIL MARKETING SUPPORTER

Based on a recent survey, 85% of ISSTD members report that email is their preferred method of receiving information on upcoming events and Society news. Weekly emails are sent to our database of 15,000+ individuals including members, course participants and conference attendees around the world.

### PACKAGE INCLUDES

- Supporter Listed in Subject Line of Email
- Supporter Logo included in email with link to company or institution website
- Acknowledgement at Annual Conference
- Free Totebag Insert at Annual Conference





# ORGANIZATIONAL MEMBERSHIP



ISSTD has four different types of Organizational Memberships (Base, Bronze, Silver and Gold). These benefits are broken up into two different categories. The first section indicates benefits included with each level of membership.

The Second section indicates point values for different benefits. Each organizational level includes a set amount of points. It is up to the organization to decide which benefits they would like to use their points towards.

Below are our first set of benefits: these are automatically given to all organizations who invest in a specific level of membership:

Organizational Membership Benefits by Level	BASE	BRONZE	SILVER	GOLD
One Individual Membership	X	X	X	X
Print subscription to Journal of Trauma & Dissociation	X	X	X	X
Member pricing for all staff on event registration	X	X	X	X
Group Rate for Individual Live Webinar (Up to Three Hours)	X	X	X	X
Group Rate for Individual Recorded Webinar (Up to Six Hours)	X	X	X	X
Organizational Listing in Upgraded Directory	X	X	X	X
Early Bird Pricing on all Exhibits/Sponsorships	X	X	X	X
Totebag insert at conference of choice		1	1	1
25% Discount on all advertising		X	X	X
Acknowledgement on Annual Conference Signage		X	X	X
25% Discount on Regional Exhibits/Sponsorship			X	X
Acknowledgement on Main and Annual Conference Websites			X	X

For additional questions or assistance, please email [membership@isstd.org](mailto:membership@isstd.org) and an ISSTD staff member will be happy to assist.



The following section indicates point values for different benefits. Each organizational membership level includes a set amount of points. It is up to the organization to decide which benefits they would like to use their points towards.

**Base - 3 points, Bronze - 8 points, Silver - 12 points, Gold - 24 points**

Organizational Membership Benefit	Points
<b>Membership</b>	
• Individual Memberships (can add up to four)	1
<b>Online Learning Center</b>	
• Group rate for up to 15 hours of recorded webinar content	1
• Group rate for up to 30 hours of recorded webinar content	2
• Group rate for annual webinar pass	3
• 90 Minute or Half Day Webinar Sponsor	1
• Full Day Webinar Sponsor	2
• Full Year Webinar Series Sponsor	5
• Virtual Conference or Virtual Seminar Registration	1
<b>Regional Conference</b>	
• Regional Conference Exhibit Booth with one registration	2
• Regional Conference Breakfast or Break Sponsor	2
<b>Annual Conference Promotional Opportunities</b>	
• Annual Conference Exhibit Booth with One Registration	4
• Additional Annual Conference Exhibitor Registration	1
• Tile Advertisement in Annual Conference App	1
• Banner Advertisement in Annual Conference App	1
• Splash Screen Advertisement in Annual Conference App	2
• Sticky Banner Advertisement in Annual Conference App	4
• Annual Conference Breakfast or Break Sponsor	2
• Annual Conference SEP Event or Morning Mindful Movement Sponsor	3
• Annual Conference Reception or Wellness & Self-Care Corner Sponsor	4
• Annual Conference totebag sponsor	8
<b>Advertise with ISSTD Members</b>	
• ISSTDWorld Homepage Banner	1
• ISSTD World Homepage Button	1
• Individual Email Sponsor	1
• Annual Email Sponsor	8

For additional questions, please email [membership@isstd-d.org](mailto:membership@isstd-d.org), and an ISSTD staff member will be happy to assist.

## Pricing for Organizational Membership

### Non-Profit and Government

#### Organization/Colleges & Universities

- Base: \$800
- Bronze: \$1,800
- Silver: \$2,800
- Gold: \$5,200

### For-Profit Organizations

- Base: \$1,000
- Bronze: \$2,100
- Silver: \$3,300
- Gold: \$6,200

## Pricing for Additional Organizational Members

Every Organizational Membership includes one individual membership. For those who are looking to join as an Organizational Member, you have several options for adding additional individual members to your membership. You can utilize the point system described on the previous page to add up to 4 individual memberships to your organizational membership with no extra cost. You can also purchase individual memberships at a discounted price. Based on the number of additional memberships you need to add, your discount will increase proportionally. These discounts include all membership types: Student, Emerging Professional, Professional, Retired. These discount also applies to the memberships as they correspond to their World Bank Membership Rates by Tier.

### Non-Profit and Government

#### Organization/Colleges & Universities

- Additional Memberships 1-9: 35% discount
- Additional Memberships 10-19: 40 % discount
- Additional Memberships 20+: 50% discount

### For-Profit Organizations

- Additional Memberships 1-9: 25% discount
- Additional Memberships 10-19: 30% discount
- Additional Memberships 20+: 40% discount

Email [membership@isst-d.org](mailto:membership@isst-d.org), and we will assist you with purchasing the additional memberships at the appropriate discounted rates.

### For Example (with 2023 Membership Rates):

- Full Membership with Printed JTD Tier 1: \$280
  - Non-profit organization adding 1-9 additional members with a 35% discount: \$182 per additional member
  - For-profit organization adding 1-9 additional members with a 25% discount: \$210 per additional member

 International Society for the Study of Trauma and Dissociation						
ISSTD World Bank Membership Rates						
Member Type	Tier I	Tier II	Tier III	Tier IV	Tier V	Tier VI
Student	\$122	\$92	\$70	\$52	\$30	\$18
Emerging Professional	\$150	\$114	\$87	\$64	\$37	\$22
Professional	\$250	\$190	\$137	\$107	\$62	\$37
Retired	\$112	\$85	\$65	\$48	\$28	\$17
For more information, contact <a href="mailto:membership@isst-d.org">membership@isst-d.org</a>						



# PRICING

## ANNUAL CONFERENCE

	EARLY 7/1/23 -2/5/2024	LATE After 2/5/24
<b>Exhibit Opportunities</b>		
Full Conference Tabletop	\$1100	\$1500
One Day Tabeletop	\$700	\$900
Additional Exhibitor Registration	\$250	\$250
<b>Supporter Opportunities</b>		
Award's or President's Reception	\$1000	\$1200
Wellness & Self-Care Corner	\$1000	\$1200
Student & Emerging Professional Event	\$750	\$950
Morning Mindful Movement	\$750	\$950
<b>Advertising Opportunities</b>		
Splash Screen	\$500	\$700
Tile	\$200	\$300
Banner	\$300	\$400
Sticky Banner	\$1000	\$1200
Totebag Insert	\$150	\$300

## VIRTUAL CONFERENCE

	EARLY 11/1/22 - 7/30/2023	LATE After 7/30/2023
<b>Advertising Opportunities</b>		
Splash Screen	\$250	\$350
Tile	\$100	\$150
Banner	\$150	\$200
Sticky Banner	\$500	\$600

# PRICING

## REGIONAL CONFERENCE

	EARLY 60+ Days Before	REGULAR 30-59 Days Before	LATE Within 30 Days
<b>Exhibit/Supporter/Advertising</b>			
Tabletop Exhibit	\$400	\$450	\$500
Additional Exhibitor Registration	\$150	\$150	\$150
Continental Breakfast or Break	\$250	\$300	\$350
Attendee Flyers	\$50	\$75	\$100
<b>Multi-Conference Discounts</b> Contact ISSTD for more information about discounts for exhibiting at more than one conference.			

## YEAR ROUND ADVERTISING AND SUPPORTERS

<b>Community Advertising</b>		<b>Webinar Supporter</b>	
Homepage Banner	\$250	90 Minute Webinar	\$250
Homepage Button	\$100	Half Day Webinar	\$350
Interior Banner	\$150	Full Day Webinar	\$500
Interior Button	\$75	Full Year Series	\$1250
<b>Email Marketing Supporter</b>			
Single Week	\$75		
Monthly	\$250		
Full Year	\$2000		

## Deadline and Details

### Regional Conferences

Exhibitor & Supporter Deadline -  
Two Weeks Prior to Conference

Advertising Deadline - Registration  
flyers must be received in the ISSTD  
office two weeks prior to the  
conference or shipped to the  
conference hotel for arrival two days  
before the conference.

### Annual Conference

Exhibitor & Supporter Deadline -  
March 15, 2024

Advertising Deadline - Materials  
must be submitted by February 29,  
2024 to guarantee inclusion in  
printed program and signage.

### Year Round Options

Webinar Deadline -  
60 Days Prior to Webinar

Email & Community Ad Deadline -  
14 Days Prior to Email /Ad Start Date

Deadlines for included benefits at  
conferences will follow the  
deadlines outlined for that conference